



Late blight
FUNGUS – (*Phytophthora infestans*)

© H.F. Schwartz, Colostate, Bugwood.org

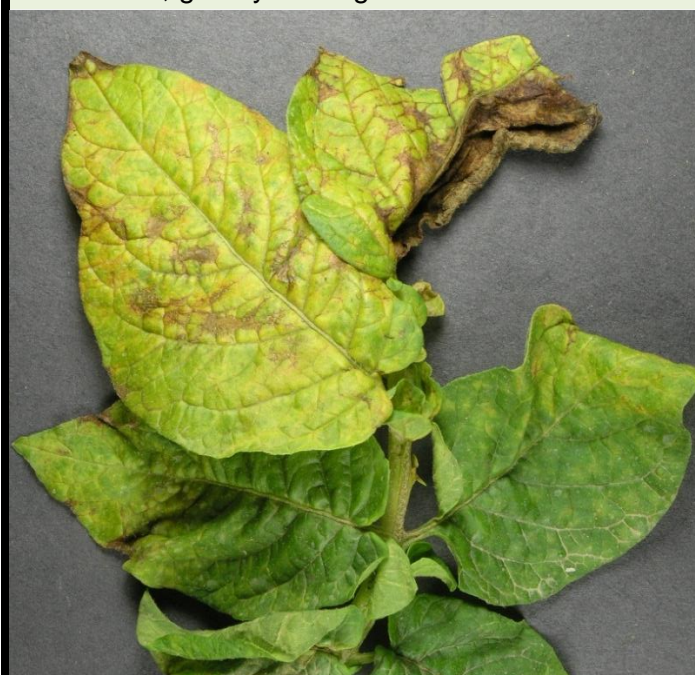
- First seen as small light- to dark-green water-soaked spots
- Lesions enlarge forming irregular-shaped large, dark brown or black lesions on leaves
- During wet weather lesions may be bordered or covered by a white moldy growth
- Brown, greasy-looking lesions on stems



Early blight
FUNGUS – (*Alternaria solani*)

© H.F. Schwartz, Colostate, Bugwood.org

- Small, circular dark spots seen on lower, older leaves
- Lesions enlarge turning brown/black and have concentric rings.
- Lesions do not cross large leaf veins and are often angular; entire leaf turns yellow, then brown and dries



Potato Virus Y
VIRUS

© B. Watt, UMaine, Bugwood.org

- Symptoms vary depending on the cultivar
- Leaf mottling and yellowing; deformed leaves; leaf and stem necrosis; premature death of stems



Herbicide damage
HERBICIDE – (Clopyralid)

© H.F. Schwartz, Colostate, Bugwood.org

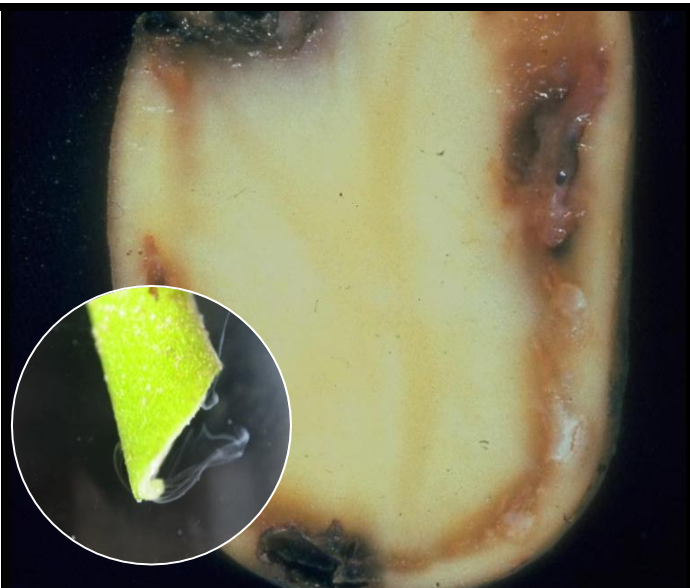
- Stunting and yellowing of newly emerged foliage; twisting, cupping and elongation of leaves



Cyst nematode NEMATODE (*Globodera pallida*)

© B. Hamneraas, Bioforsk, Bugwood.org

- Stunting, yellowing and early senescence
- Supressed tuber yield; distinct patches in field
- White or yellow spherical bodies (cysts), 0.5-1.0 mm in diameter visible on the surface of roots (arrowed).



Bacterial wilt BACTERIA – (*Ralstonia solanacearum*)

© PPSA, Bugwood.org

- Wilting of plant. This may affect one side of a leaf first, or one branch
- Mild yellow of leaves
- Milky white strands of bacteria stream from cut end of stem when placed in a glass of still, clear water (Inset)
- Bacterial ooze from tuber eyes; cut tubers with brown ring-shape discoloration



Heat damage PHYSIOLOGICAL

© H.F. Schwartz, Colostate, Bugwood.org

- Browning and curling at leaf margins
- Yellowing of leaves between veins
- Premature leaf drop



Colorado potato beetle INSECT – (*Leptinotarsa decemlineata*)

© H.F. Schwartz, Colostate, Bugwood.org

- Adult beetle about 10 mm long, with a bright yellow/orange body and five bold brown stripes along each of its wing cases
- Notches and holes on leaf; defoliation; wilted plants; yellow eggs on leaf underside